



THE LANESBOROUGH  
LONDON

Weddings & Celebrations



## Welcome

Celebrate at The Lanesborough, enjoying the utterly English style of a vibrant and elegant Regency home where Hyde Park is your front garden, and the Household Cavalry pass by in an honourary salute. We invite you to host your celebration amidst classic period elegance, mixing in some contemporary party culture. The Lanesborough is also a licensed venue for civil ceremonies, allowing you to make your wedding celebration truly unforgettable.





## The Lanesborough Flair

There is much that distinguishes an exclusive and intimate event at The Lanesborough, our access, our location, our expertise, our wine cellar, gastronomy and of course our inherent elegance. Whether it is an intimate lunch for ten, a spectacular dinner for 90, or a elegant baby-shower allow us to inspire you with some special Lanesborough flair for your wedding or celebration.



## The St. George's

A warm, inviting and charismatic private dining room, The St. George's mixes Regency opulence with a hint of glamour. Three original Georgian windows frame views of a much-loved London landmark, Wellington Arch, erected at the same time as the hotel building, in celebration of Britain's victory in the Napoleonic Wars. High ceilings, chandeliers, period artworks, an original Regency fireplace and a dado featuring beautiful wood marquetry make for majestic surroundings; the carpet finishes the room with a dash of modern panache.







## The Belgravia

The Belgravia is one of the finest formal dining rooms in London, where your event will be distinguished by traditions and etiquette, in a room flooded with natural daylight. Our highly skilled team will ensure the smoothest experience, there will be streams of white linen, polished porcelain and cut crystal, the setting will be the height of elegance with candlelight reflecting in the antiqued Venetian glass panelling.







## The Wellington

A Georgian fireplace makes a warm traditional setting for grand dinners, with the space to host a variety of different events, from carefully curated children's celebrations and christening receptions to bespoke parties with DJ's and dancefloors.







## The Westminster

The Westminster Room offers another distinct contrast perfect for receptions, glamorous dinners and day time social events: the airy conservatory atmosphere of daylight flooding through a dramatic glass roof. Diaphanous canopies beautifully diffuse natural light throughout the room, creating a glorious, sun-filled setting for a wedding ceremony, reception or private dinner. Chinoiserie-style wallcoverings by de Gournay illuminate the ambience further, and the room's crystal chandelier provides a breath-taking centrepiece for the most sparkling occasion.





## The Wilkins

Relief sculptures elegantly adorn the walls of The Wilkins, one of the three connecting rooms on the lower ground floor, which perfectly links with both the Wellington and Westminster. Equally ideal as an additional reception room or breakout area, The Wilkins is the perfect room for smaller gatherings and social occasions.







## The Wine Cellar

Hosting a tasting event, or dinner, in The Lanesborough's intimate and atmospheric cellar is an historic experience in many different respects, especially when it involves the rarest of Cognac's from the Lanesborough's Liquid Paradis selection, dating back to 1770, and menus devised by Michelin-starred chef Steeven Gilles.







## Always a Gourmand Experience

Private dining, banquets, rehearsal dinners and large private parties will be as individual as your personal occasion, with la carte menus overseen by Michelin-starred Head Chef Steeven Gilles. Tastings with our talented chefs are hosted in one of our elegant private rooms or Céleste until we have perfected your menu.







## Gastronomic Britart

Each canapé and every dish is a work of art, frequently eliciting an intake of breath upon presentation. Executive Chef Steeven Gilles is the 'artistic curator' of gastronomy. Steeven seeks out the best ingredients, producers and suppliers the country has to offer and prepares exquisite and inventive creations with classic techniques.



## Wine Pairings

Pierre-Marie Faure, head sommelier, will pair the perfect vintage with your menu, attending menu tastings to ensure an excellent match from The Lanesborough's extensive cellars. Private dinners can be elevated with a dynamic pairing, and our sommelier will make a selection of recommendations for each course.

## Cocktail Consultations

Greet guests on your receiving line, or in the first reception room with vintage champagne, a Bellini or something more personal. It will be the pleasure of head barman, Mickael Perron, to alight on the perfect welcome drink, with personal consultations in The Library Bar.



## The Lanesborough Tea

Tea in the Regency period was a highly exclusive event; afternoon tea at The Lanesborough still is. Hold your reception in our elegant private dining rooms, with cascades of delicate savouries and exquisite cakes, or invite friends for a pre-wedding tea party.

## Baby Showers, Christenings and Children's Parties

Little ones are valued as much as our grown-up guests at The Lanesborough and whether your child dreams of being a fairytale princess or partying in a world of their favourite cartoon character, our skilled team is on hand to design an event that will create cherished life long memories.



## The Lanesborough Fleet

Whilst you are having an event here, the entire The Lanesborough fleet is at your disposal. Our impeccable chauffeur-driven car service affords guests access to our famous Rolls-Royce Phantom with its extended wheelbase affording acres of space, Audi A8's and Mercedes S-Class models.

## Exclusivity and Intimacy

The residential design and scale of The Lanesborough allows social events and weddings at the hotel to maintain an unparalleled level of exclusivity and intimacy, with private dining rooms and spaces situated in the very heart of an iconic London institution.



## Floristry

Our talented and highly skilled team of in-house floral designers is available to assist with all floral and design requirements, from opulent table pieces to refined room dressing and elegant wedding arrangements.



## The Lanesborough Club & Spa

With exclusive and industry leading treatments from La Prairie, ila, Tata Harper and one of world's most impressive facial innovators, Anastasia Achilleos, the 20,000 ft<sup>2</sup> Club & Spa is the perfect haven for pre and post event pampering. Breath-taking in design and uncompromising in choice, guests can discover four single treatment rooms and one double treatment room, complete with Rasul and double shower, separate thermal suites for ladies and gentlemen, plus spacious changing rooms and a stunning hydro-pool, serviced by Spa Butlers. Meanwhile the Painting Room provides an immaculate setting for the finishing touches to hands and toes.



## In House Hair Salon

Brides-to-be and guests wanting to look their very best during an event at The Lanesborough can visit the hotel's salon for a blow dry, styling or colouring.

## Rooms & Suites

Perfect for a wedding night or for those wanting to stay the night after a party, our 93 rooms, including 43 suites, are all stunningly furnished in the building's original Regency style: many with views over the neighbouring Royal Parks or towards Buckingham Palace.

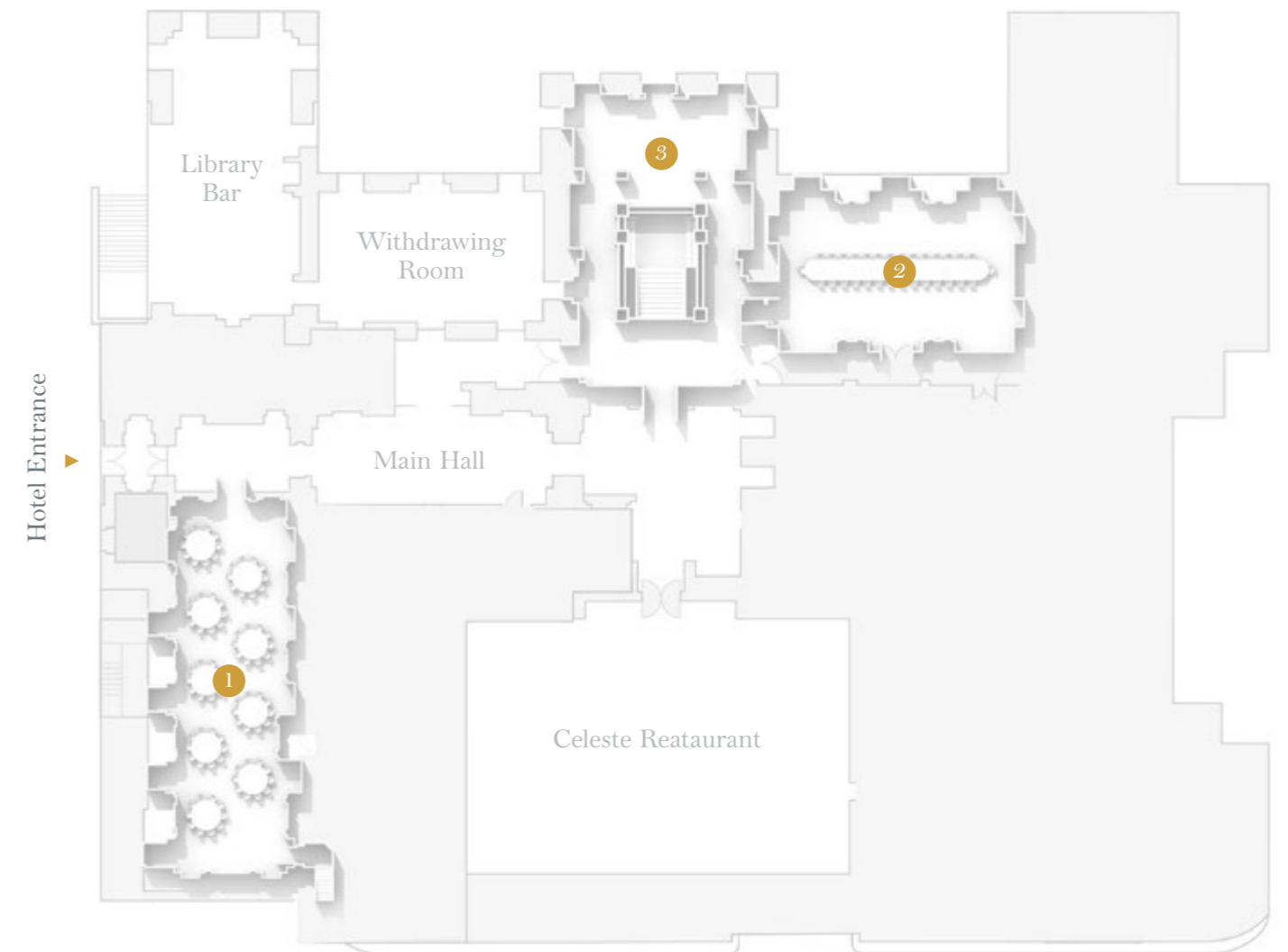




## Upper Ground Floor

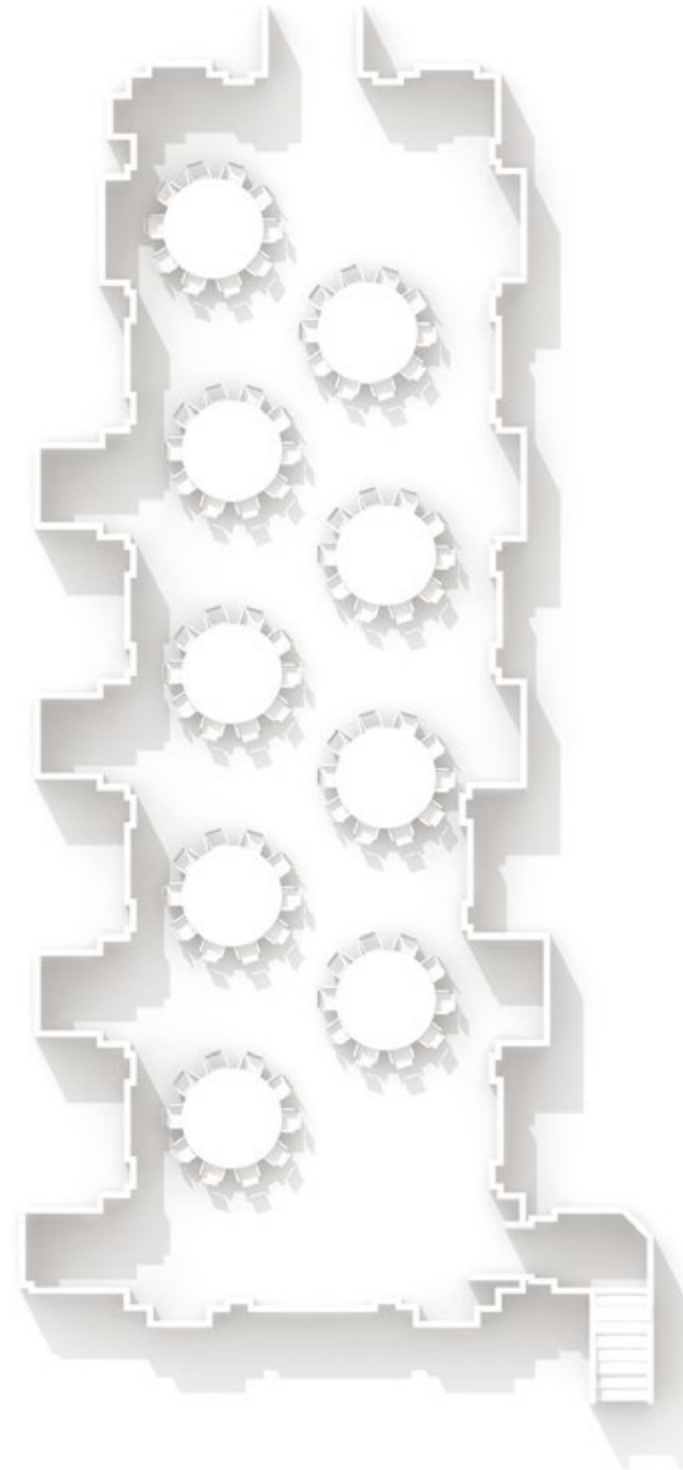
The beating heart of the hotel, the Upper Ground Floor features The Lanesborough's two largest spaces, The Belgravia and The St. George's, both flooded with natural daylight and accessed directly from the main hotel hall. Hand painted in lavish trompe l'oeil, the Great Hall is also located on this floor and is perfect for a reception or cocktail party.

- 1 The Belgravia
- 2 The St. George's
- 3 The Great Hall



# The Belgravia

-   
 LUNCH  
90
-   
 DINNER  
90
-   
 BOARDROOM  
48
-   
 RECEPTION  
180
-   
 OVAL  
48
-   
 THEATER  
80
-   
 U-SHAPE  
36
-   
 CLASSROOM  
60
-   
 CABARET  
48



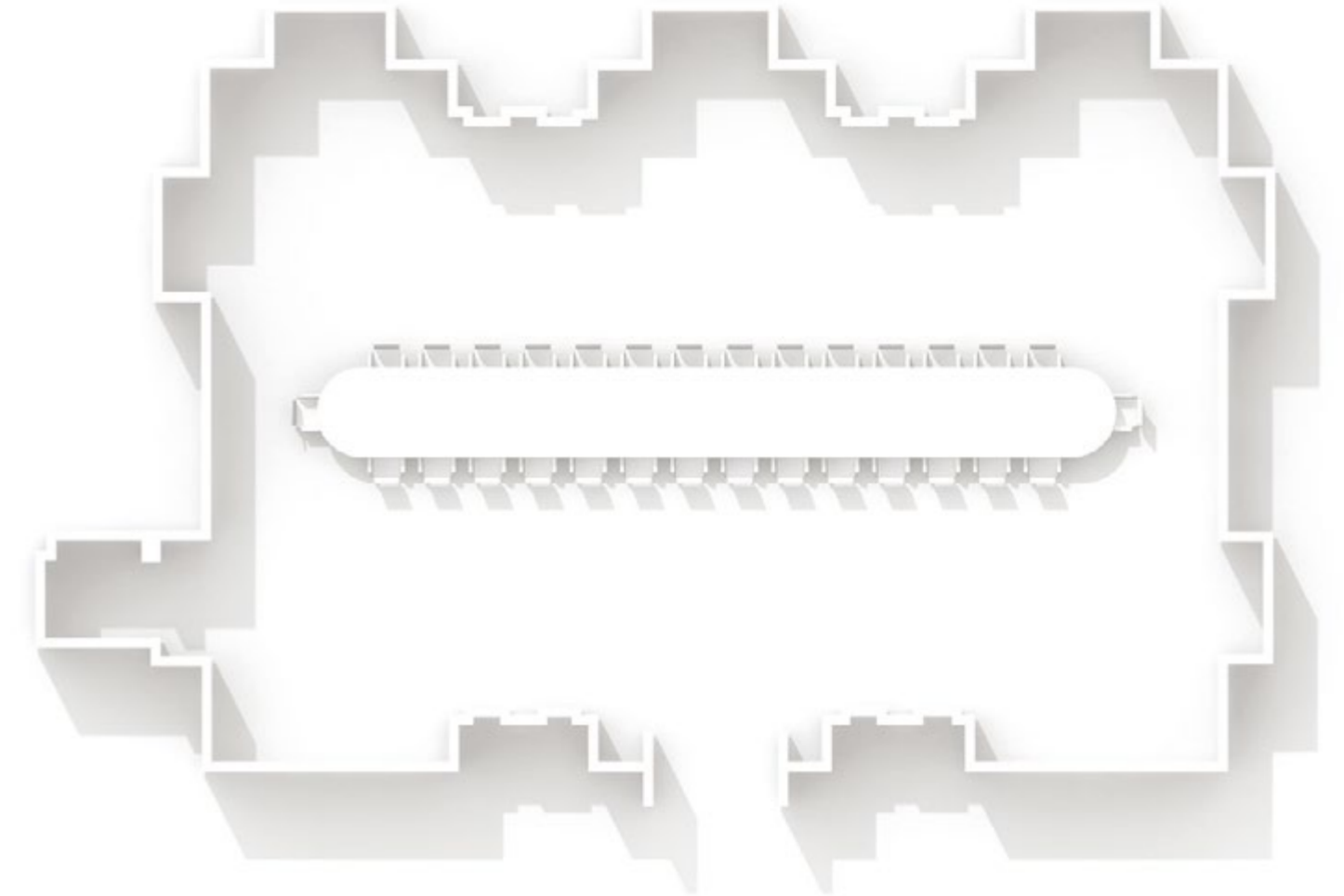
## SPECIFICATION

Dimensions: 67 x 22 ft / 20 x 7 m  
 Area: 1,487 ft<sup>2</sup> / 139 m<sup>2</sup>  
 Ceiling Height: 12.5 ft / 4 m  
 Daylight: Yes



# The St. George's

-   
 LUNCH  
50
-   
 DINNER  
50
-   
 BOARDROOM  
30
-   
 RECEPTION  
80
-   
 OVAL  
30
-   
 THEATER  
80
-   
 U-SHAPE  
26
-   
 CLASSROOM  
32
-   
 CABARET  
30



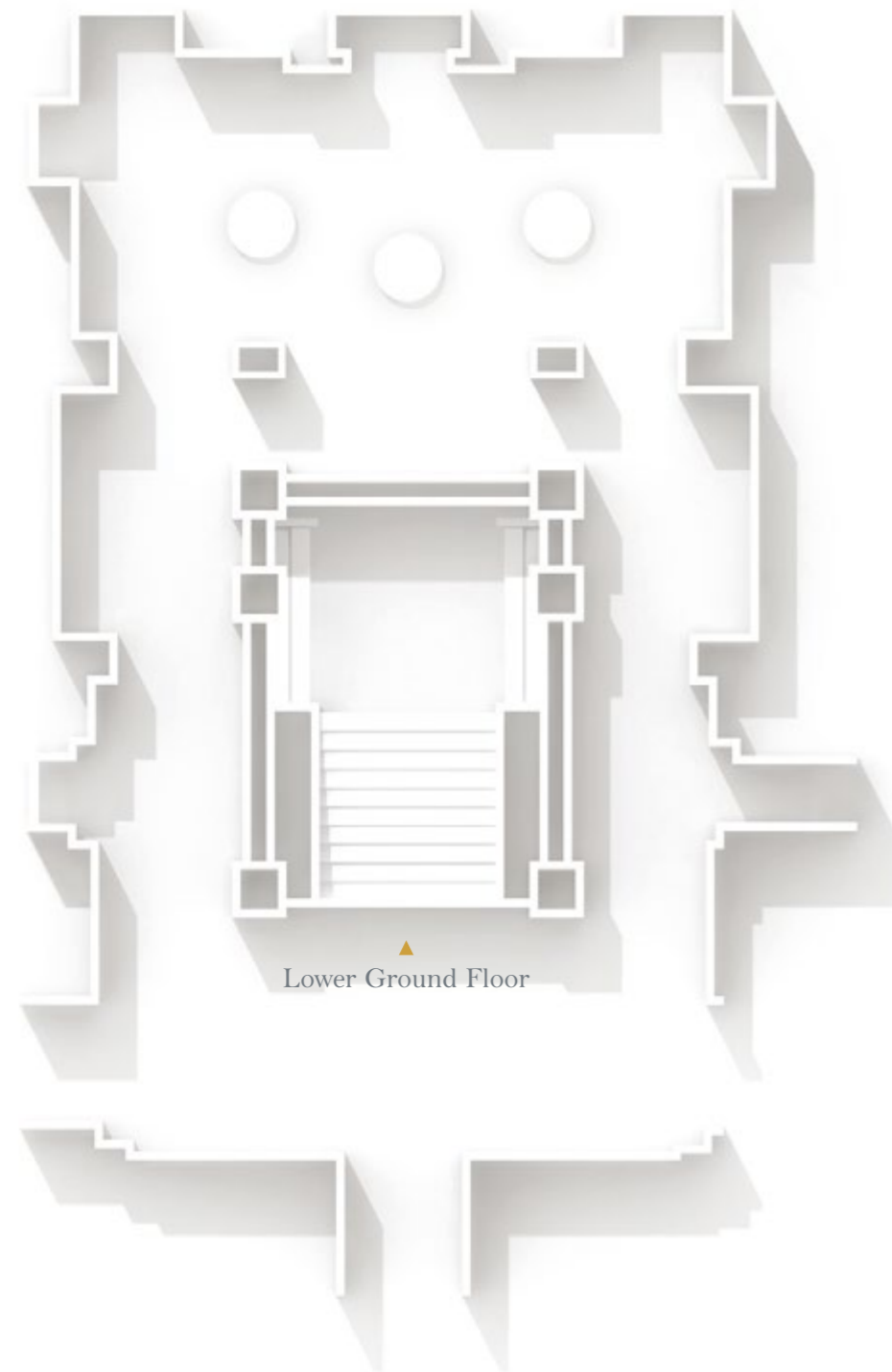
## SPECIFICATION

Dimensions: 41 x 26 ft / 12 x 8 m  
 Area: 1,064 ft<sup>2</sup> / 102 m<sup>2</sup>  
 Ceiling Height: 12.5 ft / 4 m  
 Daylight: Yes



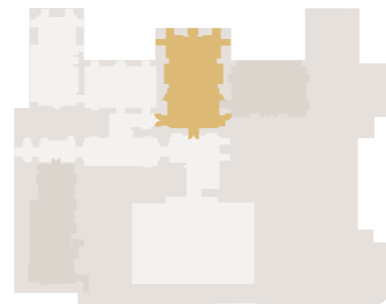
# The Great Hall

RECEPTION  
100



### SPECIFICATION

Ceiling Height: 12.5 ft / 4 m  
Daylight: Yes



The Great Hall

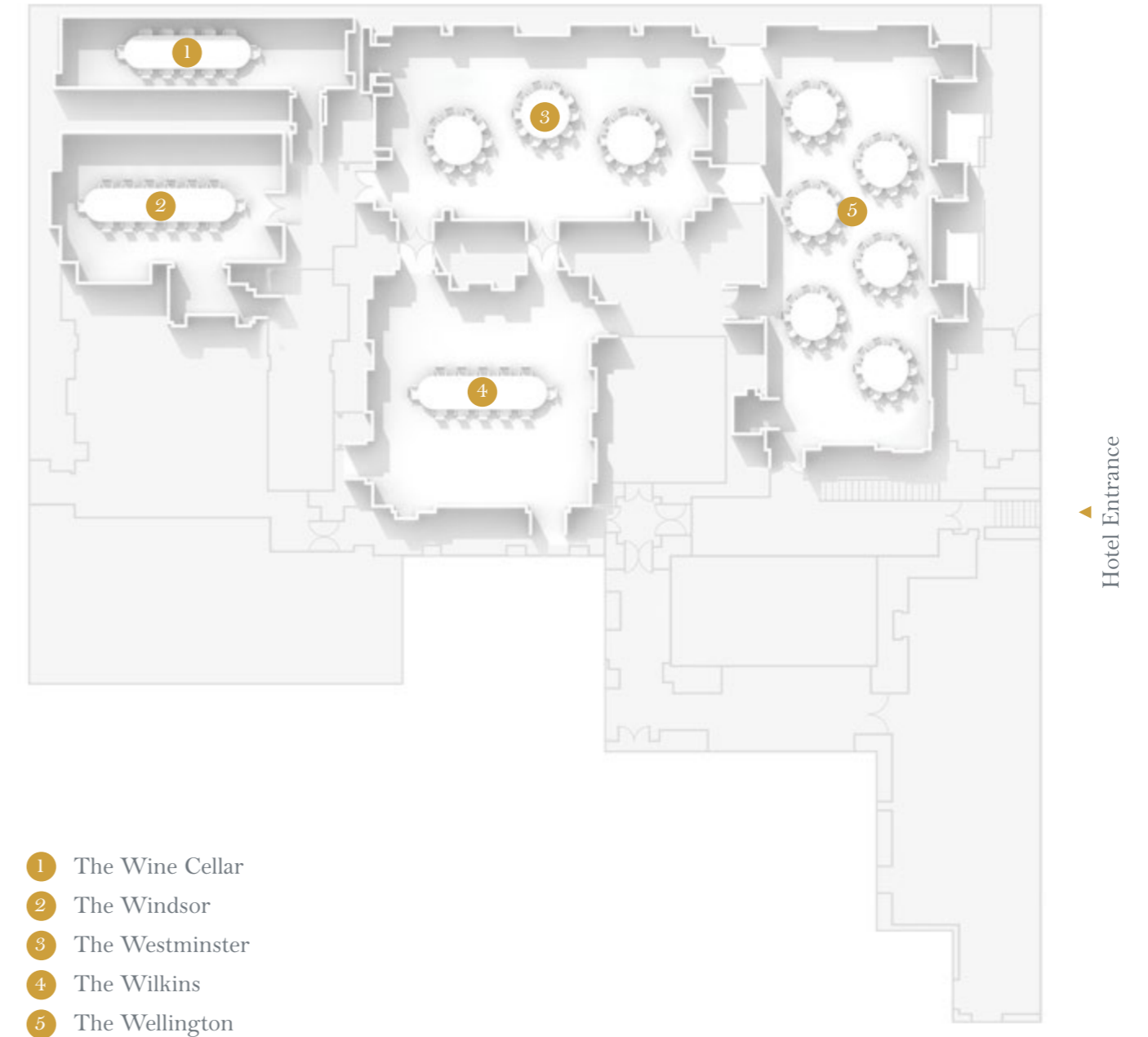






## Lower Ground Floor

The lower ground floor comprises five individual and unique private dining rooms with unique personalities, with The Westminster and The Wellington benefitting from natural daylight. The spaces are interconnected allowing for flexibility and a natural flow during events and parties.

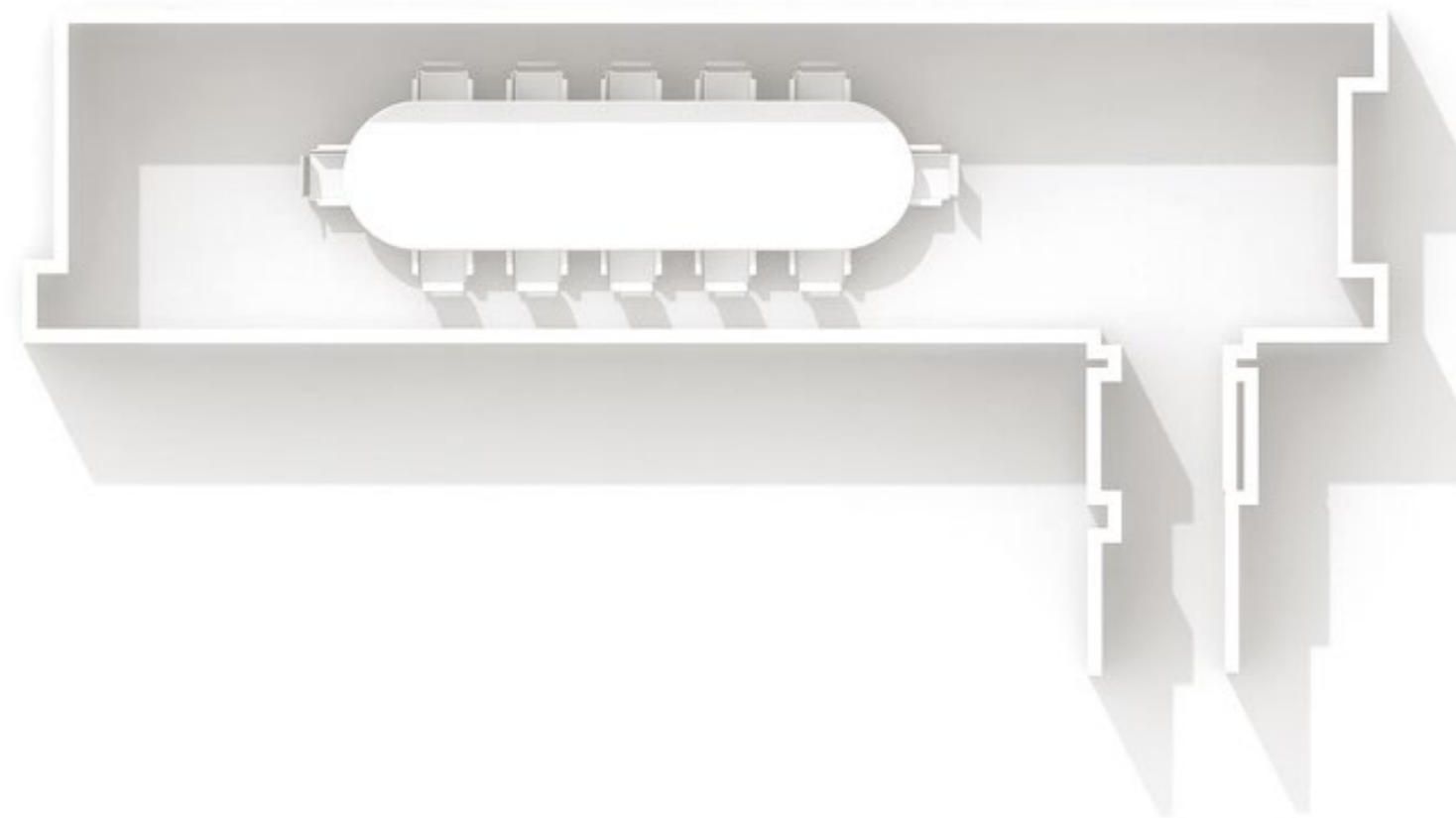


# The Wine Cellar

- BOARDROOM  
12
- RECEPTION  
20

## SPECIFICATION

Dimensions: 33 x 8 ft / 10 x 2 m  
Area: 256 ft<sup>2</sup> / 24 m<sup>2</sup>  
Ceiling Height: 10 ft / 3 m  
Maximum Guests: 12  
Daylight: No

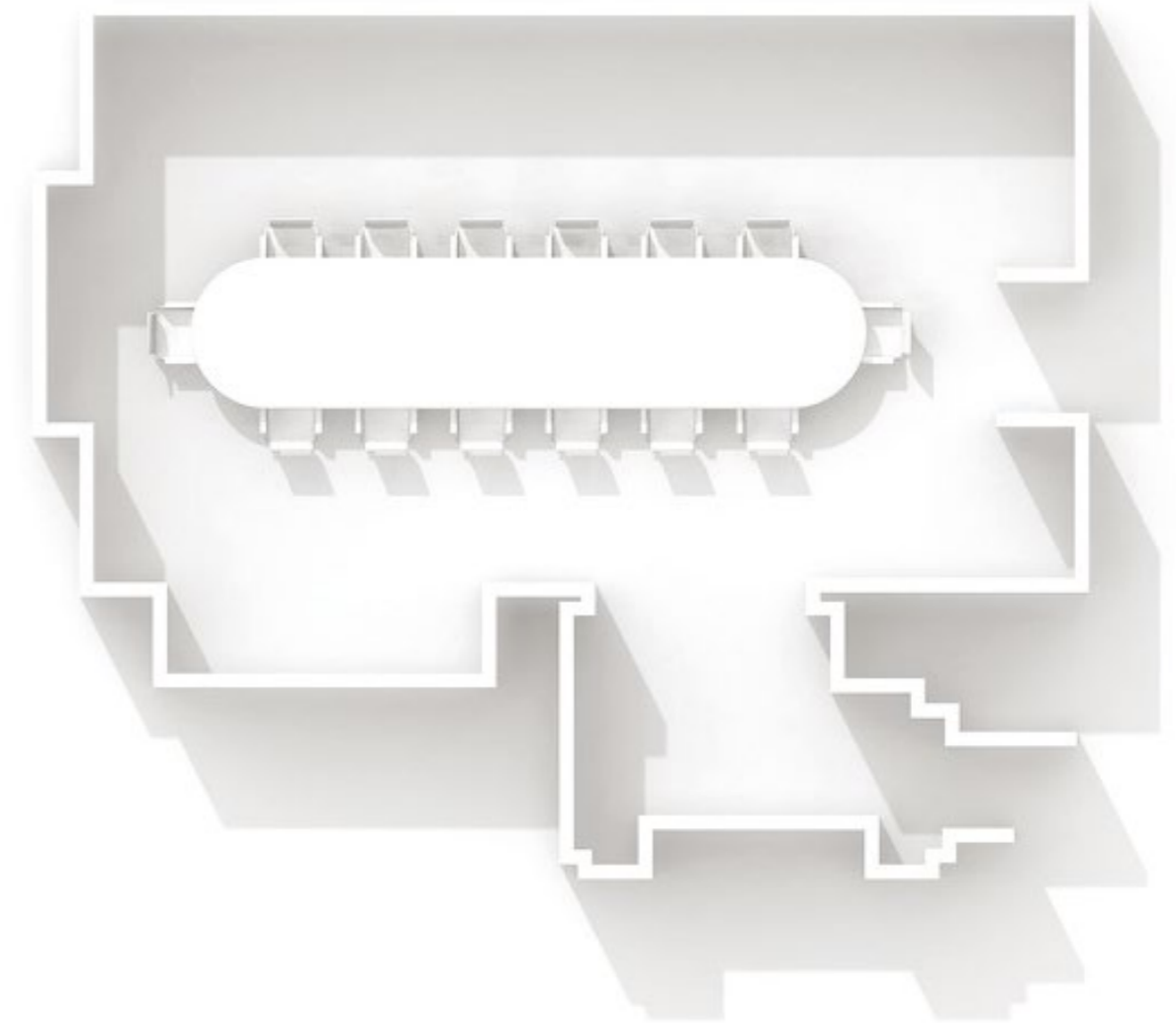


# The Windsor

- LUNCH  
20
- DINNER  
20
- BOARDROOM  
14
- OVAL  
14

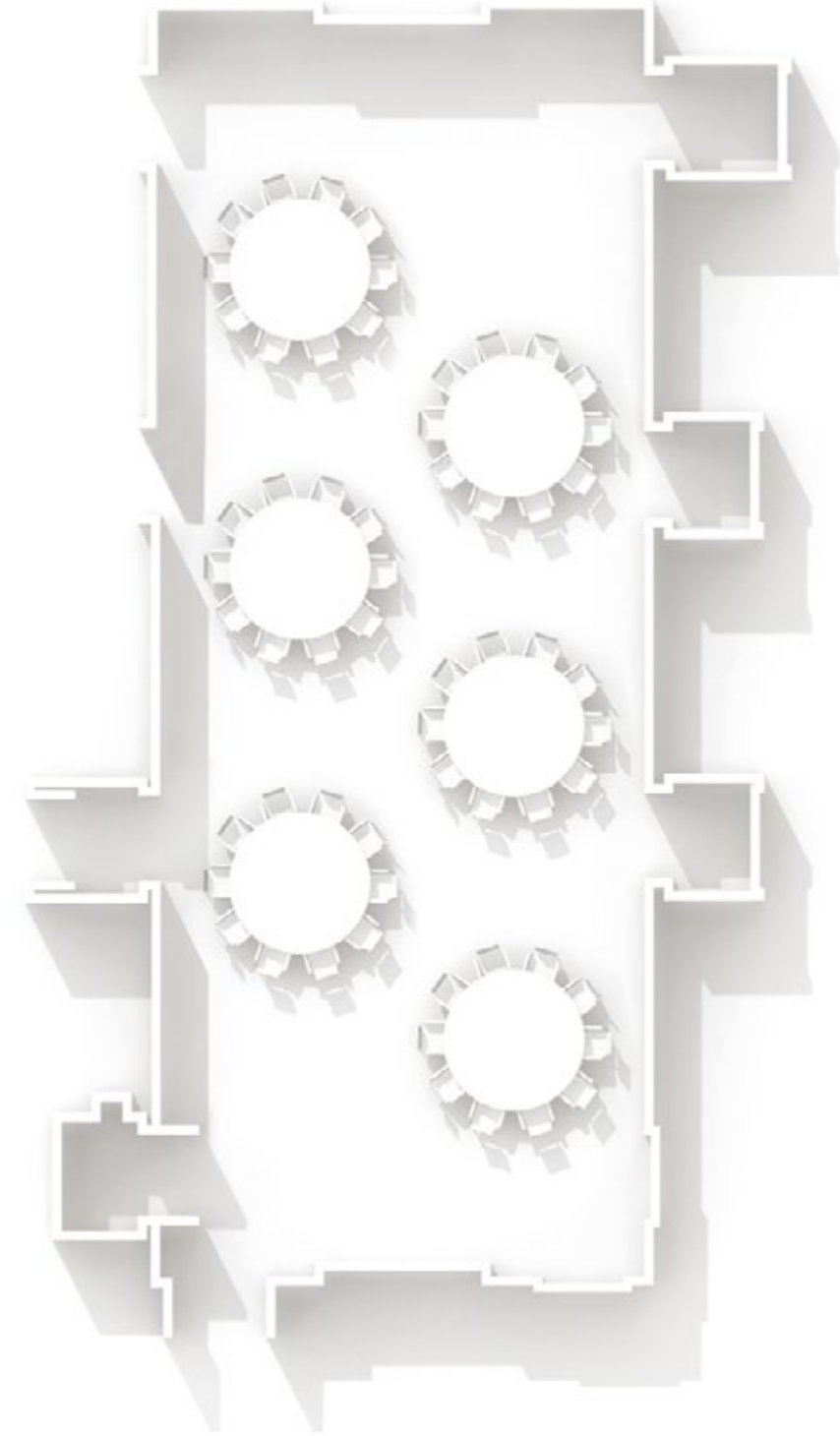
## SPECIFICATION

Dimensions: 21 x 13 ft / 6.5 x 4 m  
Area: 264 ft<sup>2</sup> / 25 m<sup>2</sup>  
Ceiling Height: 9 ft / 3 m  
Daylight: No



# The Wellington

-   
 LUNCH  
60
-   
 DINNER  
60
-   
 BOARDROOM  
34
-   
 RECEPTION  
90
-   
 OVAL  
34
-   
 THEATER  
60
-   
 U-SHAPE  
36
-   
 CLASSROOM  
40
-   
 CABARET  
36



**SPECIFICATION**

Dimensions: 49 x 19 ft / 15 x 6 m  
 Area: 954 ft<sup>2</sup> / 88 m<sup>2</sup>  
 Ceiling Height: 8.5 ft / 3 m  
 Daylight: Yes



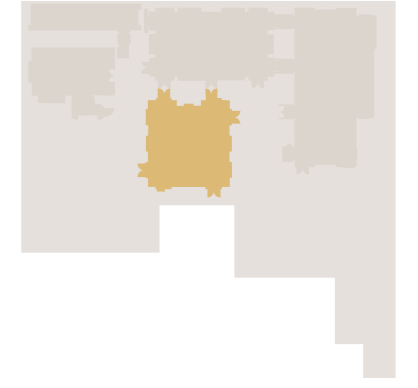
# The Wilkins

-   
 LUNCH  
20
-   
 DINNER  
20
-   
 BOARDROOM  
16
-   
 RECEPTION  
30
-   
 OVAL  
16
-   
 THEATER  
30
-   
 U-SHAPE  
15
-   
 CLASSROOM  
12
-   
 CABARET  
12



**SPECIFICATION**

Dimensions: 23 x 23 ft / 7 x 7 m  
 Area: 543 ft<sup>2</sup> / 50 m<sup>2</sup>  
 Ceiling Height: 8 ft / 2.15 m  
 Daylight: No

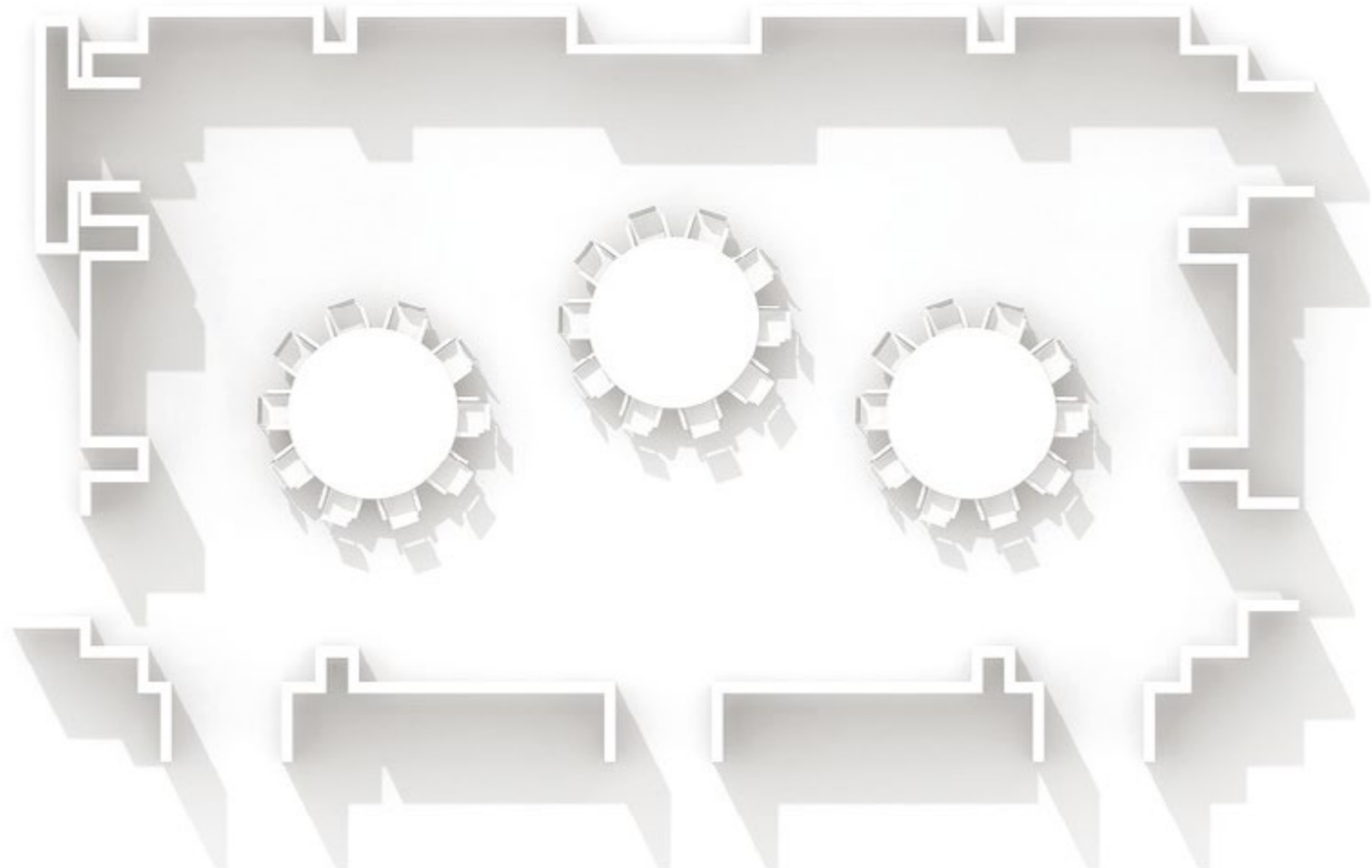


# The Westminster









-   
 LUNCH  
30
-   
 DINNER  
30
-   
 BOARDROOM  
22
-   
 RECEPTION  
60
-   
 OVAL  
22
-   
 THEATER  
40
-   
 U-SHAPE  
20
-   
 CLASSROOM  
24
-   
 CABARET  
24

## SPECIFICATION

Dimensions: 36 x 24 ft / 11 x 6.5 m  
 Area: 769 ft<sup>2</sup> / 71 m<sup>2</sup>  
 Ceiling Height: 12 ft / 2.45 m  
 Daylight: Yes



## Room Capacities

	 Lunch	 Dinner	 Boardroom	 Reception	 Oval	 Theater	 U-Shape	 Classroom	 Cabaret
The Belgravia	90	90	48	180	48	80	36	60	48
The St. George	50	50	30	80	30	80	26	32	30
The Great Hall	-	-	-	100	-	-	-	-	-
The Wine Cellar	-	-	12	20	-	-	-	-	-
The Windsor	20	20	14	-	14	-	-	-	-
The Wellington	60	60	34	90	34	60	36	40	36
The Wilkins	20	20	16	30	16	30	15	12	12
The Westminster	30	30	22	60	22	40	20	24	24





THE LANESBOROUGH  
LONDON



OETKER COLLECTION  
*Masterpiece Hotels*

[www.oetkercollection.com](http://www.oetkercollection.com)

The Lanesborough, Hyde Park Corner, London, SW1X 7TA T +44 (0)207 259 5599  
[www.lanesborough.com](http://www.lanesborough.com) [privatedining@lanesborough.com](mailto:privatedining@lanesborough.com)