



THE LANESBOROUGH
LONDON

Meetings & Events



Regency Spirit Contemporary Glamour

The Lanesborough is a masterpiece among London's five-star hotels. Grand in its Regency architecture and style, its residential entrance and imposing fireplace, and series of interconnecting ground floor reception rooms, feels like a townhouse on the grandest scale, with the most luxurious and sophisticated services and amenities.

Meetings and Events at The Lanesborough

Host your meeting or private event in a truly British Institution, where staff remember your every whim, where a fire roars in winter, where warm Regency colours glow in every room. Our expertise in planning and executing your meeting or event to precision, accompanied by outstanding gastronomy, wine cellar, and inherent elegance, whether it be a board meeting for 25 or a glamorous dinner for 128, allow us to inspire you with our authentic spirit of original London high life.

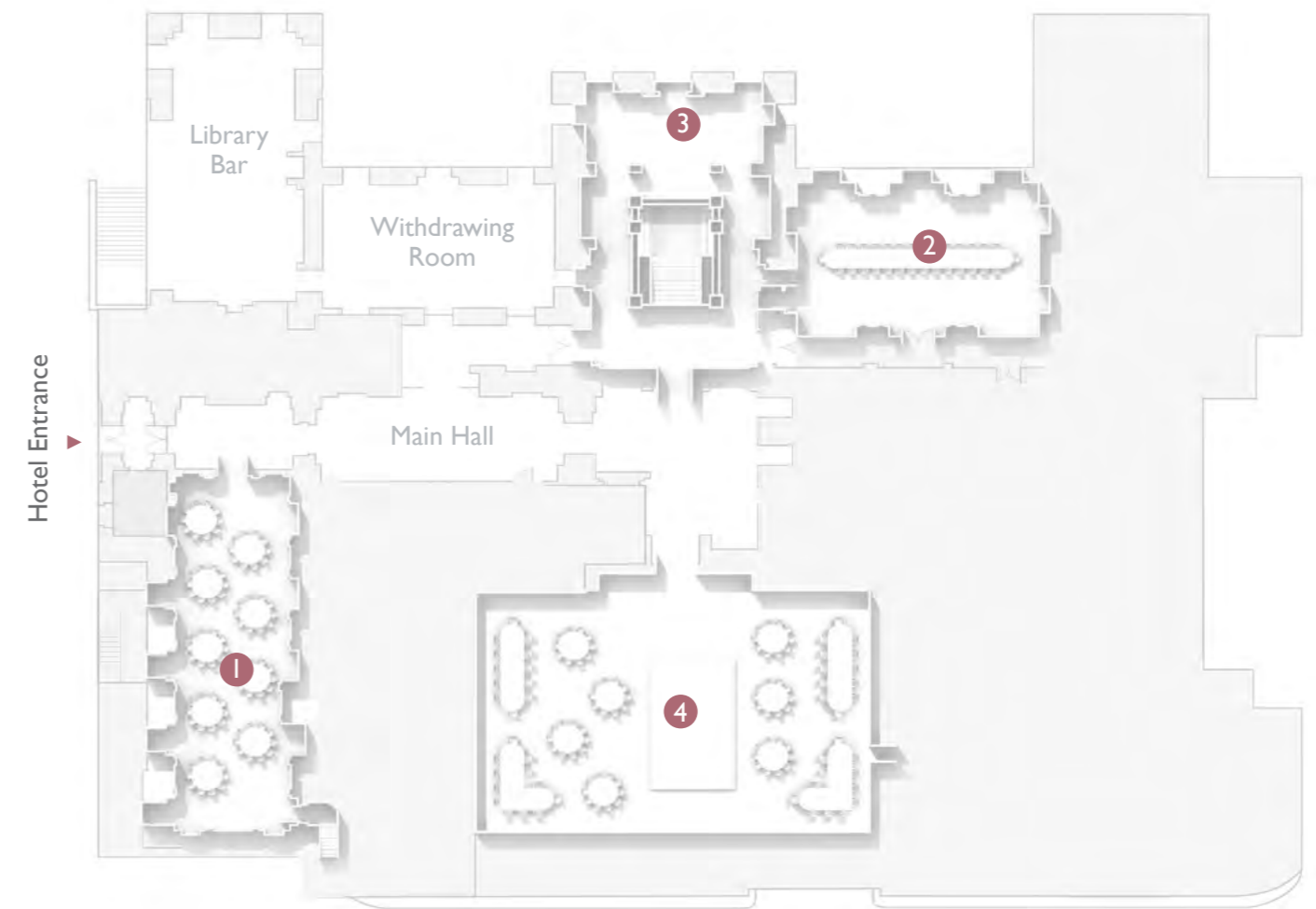




Upper Ground Floor

The beating heart of the hotel, the Upper Ground Floor features The Lanesborough's two largest spaces, The Belgravia and The St. George's, both flooded with natural daylight and accessed directly from the main hotel hall. Hand painted in lavish trompe l'oeil, the Great Hall is also located on this floor and is perfect for a welcome reception or cocktail party.

- 1 The Belgravia
- 2 The St. George's
- 3 The Great Hall
- 4 Lanesborough Restaurant



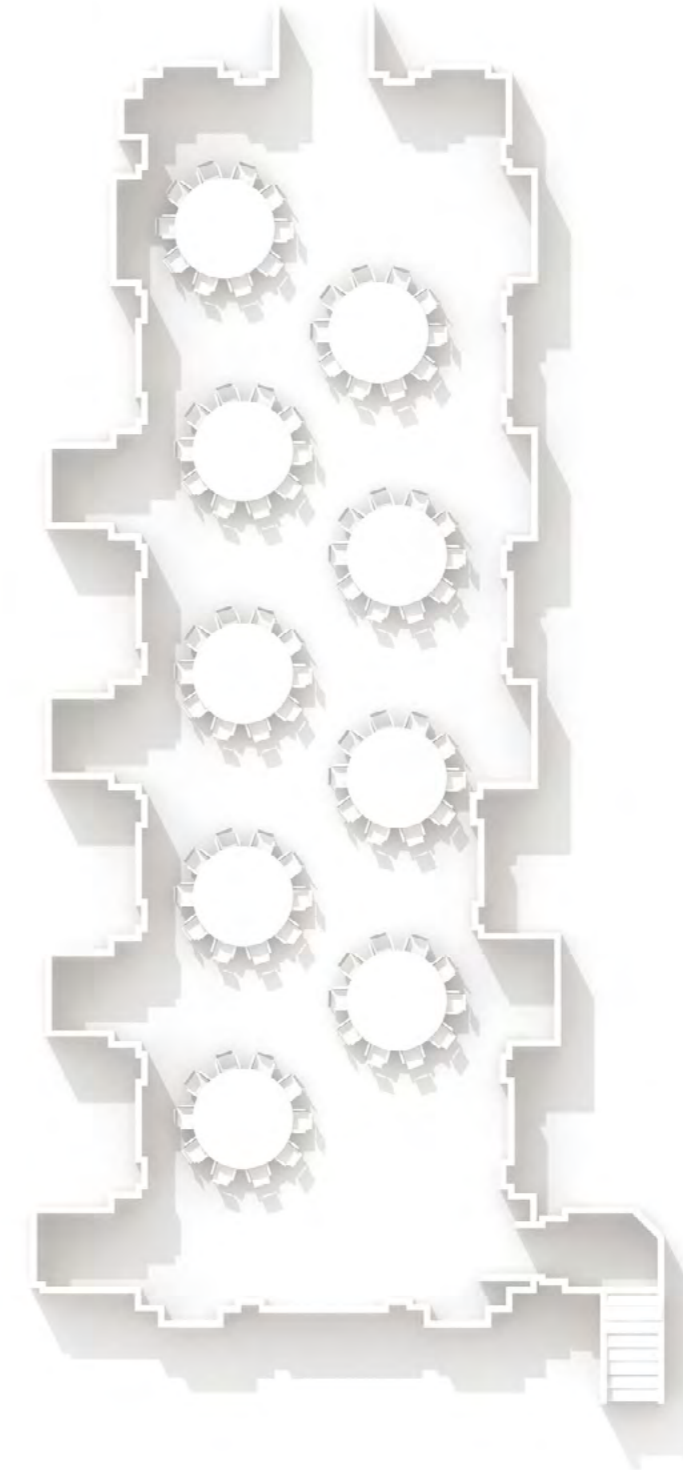
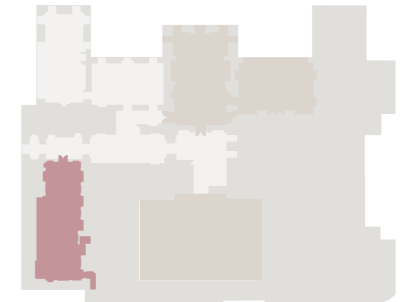


The Belgravia

 LUNCH 110	 DINNER 110	 BOARDROOM 50	 RECEPTION 100	 OVAL 50	 THEATER 100	 U-SHAPE 40	 CLASSROOM 60	 CABARET 55
---	--	--	---	---	---	--	--	--

SPECIFICATION

Dimensions: 67 x 22 ft / 20 x 7 m
 Area: 1,487 ft² / 139 m²
 Ceiling Height: 12.5 ft / 4 m
 Daylight: Yes



The Belgravia

The Belgravia is one of the finest formal meeting rooms in London, exquisitely designed and flooded with natural daylight.

The Belgravia features:

- Large Georgian period windows overlooking Hyde Park
- Impressive cut-crystal chandeliers
- High, hand-painted fresco ceilings
- Working cosy fireplace
- Period Artworks

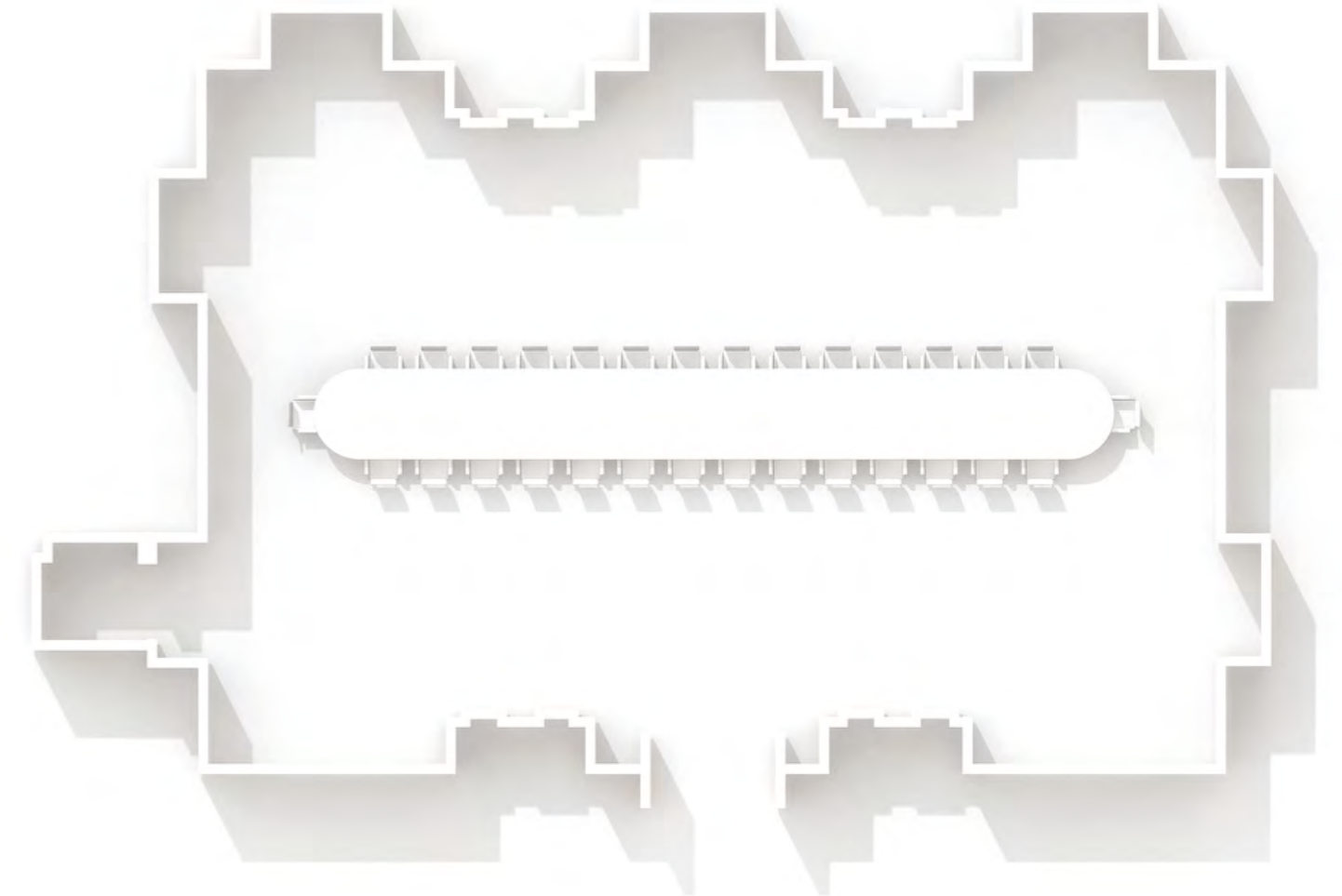
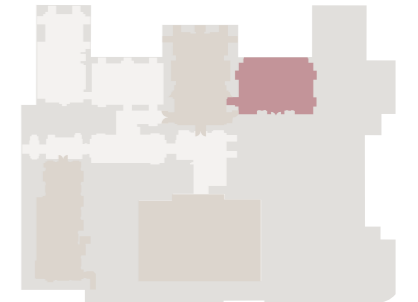


The St. George's

 LUNCH 50	 DINNER 50	 BOARDROOM 30	 RECEPTION 80	 OVAL 30	 THEATER 80	 U-SHAPE 26	 CLASSROOM 32	 CABARET 32
---	--	---	---	--	---	---	---	---

SPECIFICATION

Dimensions: 41 x 26 ft / 12 x 8 m
 Area: 1,064 ft² / 102 m²
 Ceiling Height: 12.5 ft / 4 m
 Daylight: Yes



The St. George's

A warm, inviting and charismatic private meeting room,
 with a statesroom feel.

The St. George's features:

- Large Georgian period windows overlooking Wellington Arch
- High ceilings with delicate gold-leaf detailing
 - Refined cut-crystal chandeliers
 - Working cosy fireplace
- Period Artworks, Beautiful wood marquetry

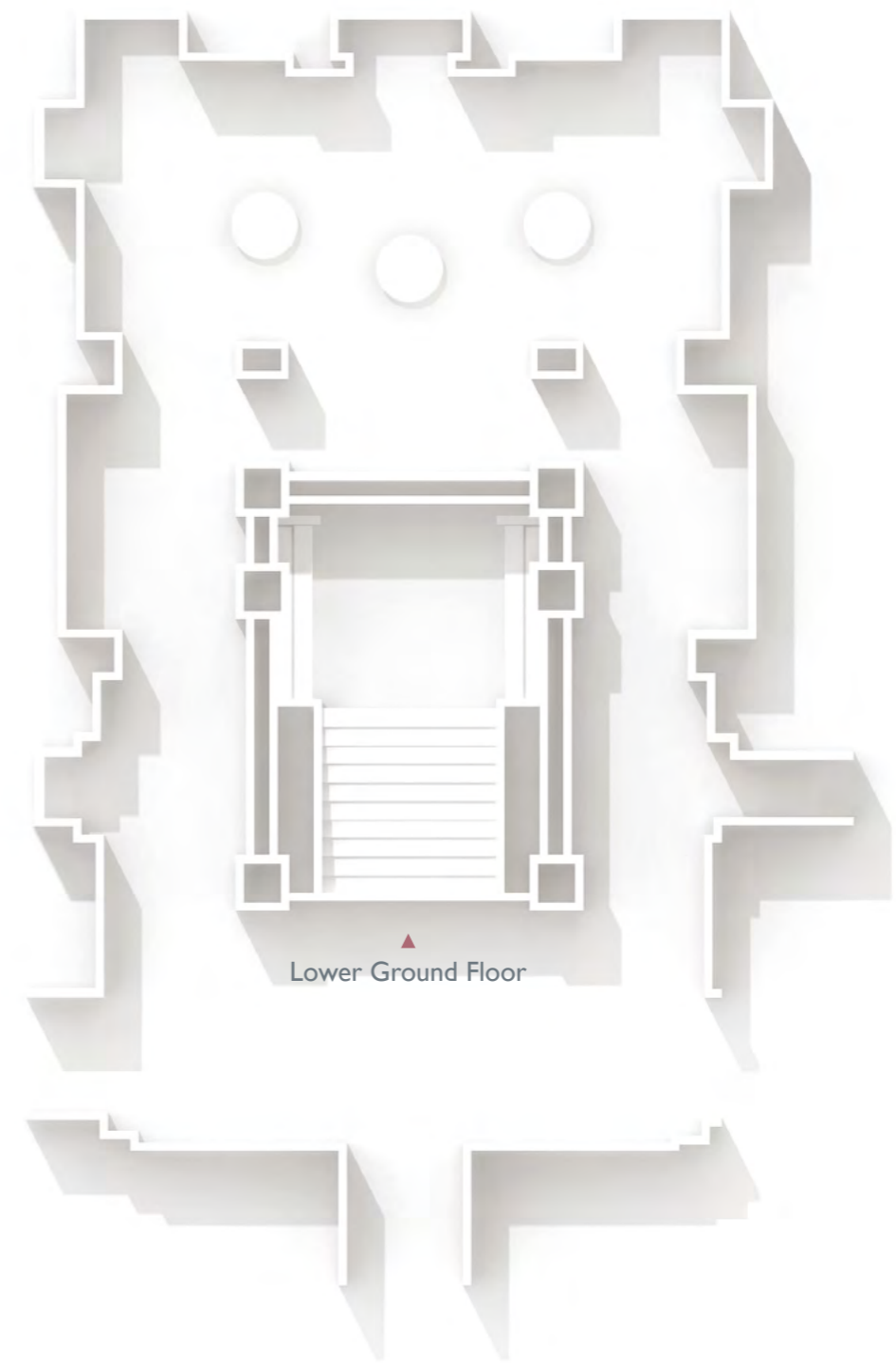
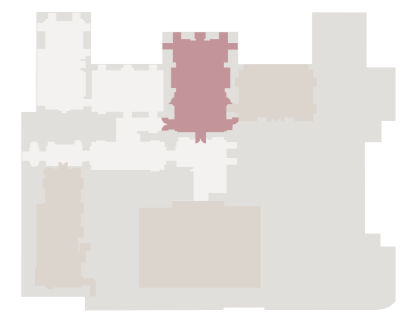


The Great Hall

RECEPTION
120

SPECIFICATION

Ceiling Height: 12.5 ft / 4 m
Daylight: Yes



The Great Hall

The original entrance to the building and affectionately known as ‘The Queen’s entrance’. The Great Hall features incredible trompe-l’oeil wall painting, providing a magnificent semi-private backdrop for a welcome reception or glittering cocktail party.

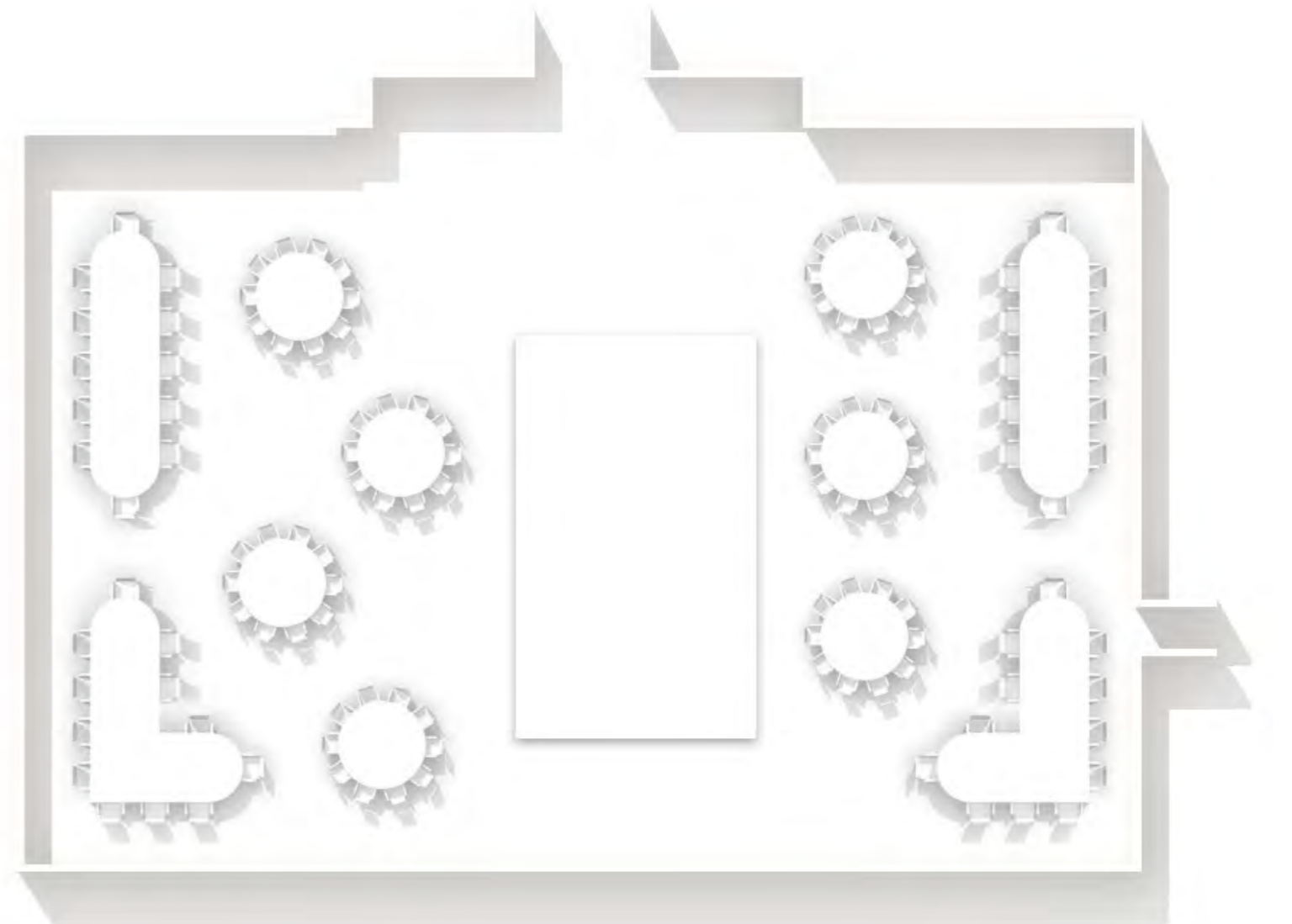
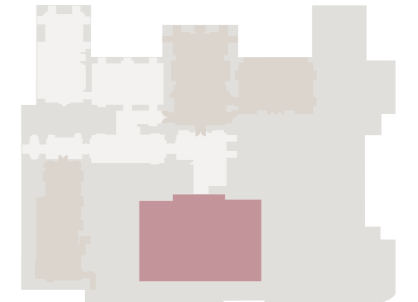


The Lanesborough Restaurant

 SEATING 150	 STANDING RECEPTION 240	 DINNER & DANCE 128
---------------------------	---	-------------------------------------

SPECIFICATION

Dimensions: 44 x 67 ft / 13.4 x 20.4 m
 Area: 3,100 ft² / 288 m²
 Ceiling Height: 24 ft / 7.3 m
 Daylight: Yes



The Lanesborough Restaurant

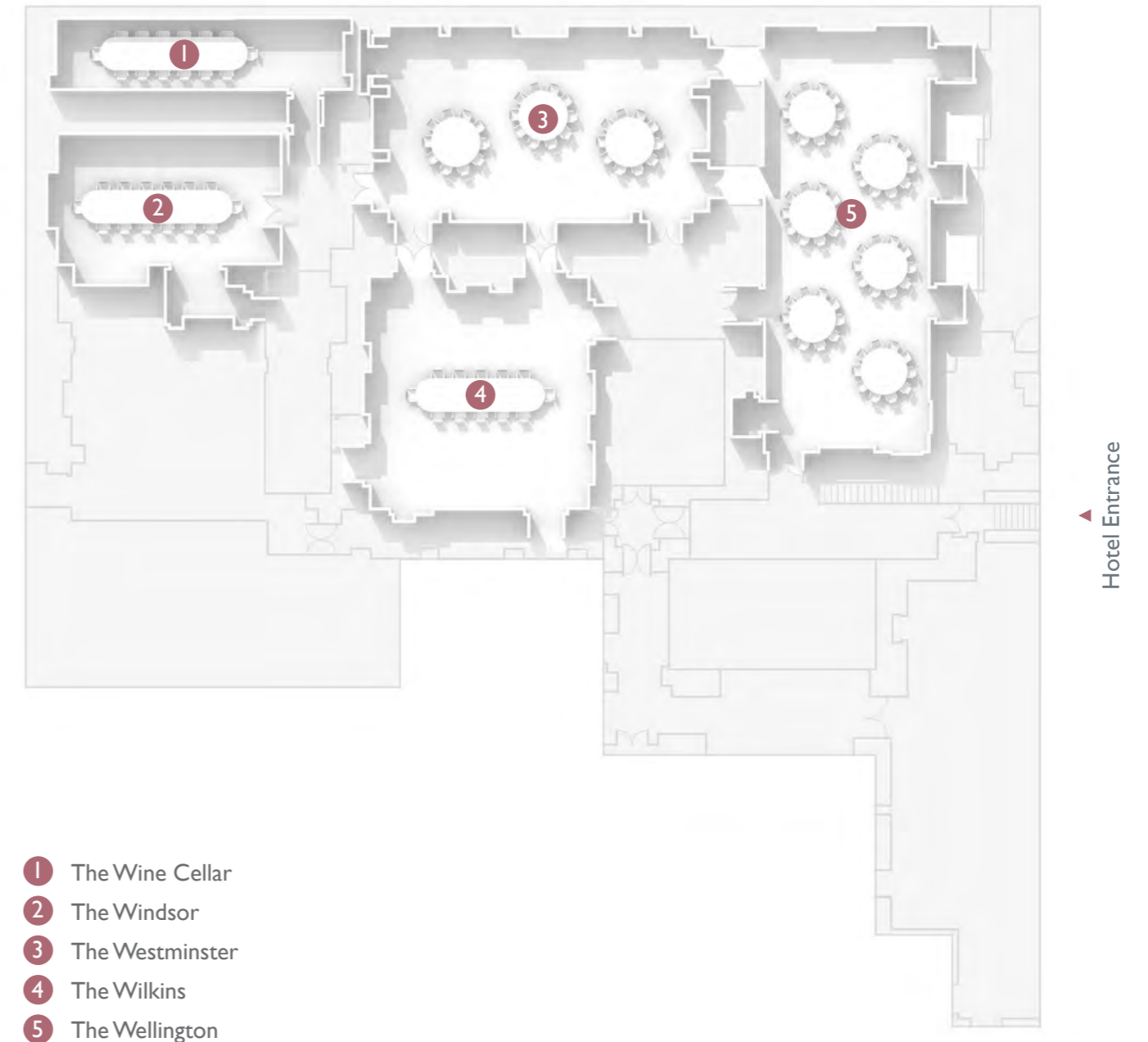
Exclusive hire of The Lanesborough Restaurant is available for private parties, weddings and larger dinners.

A richly decorated dining room, naturally illuminated during the day by a domed glass roof while seductively aglow under softly lit chandeliers in the evening.



Lower Ground Floor

The lower ground floor comprises five individual and unique meeting spaces with unique personalities, with The Westminster and The Wellington benefiting from natural daylight. The spaces are interconnected allowing for flexibility and a natural flow during events.





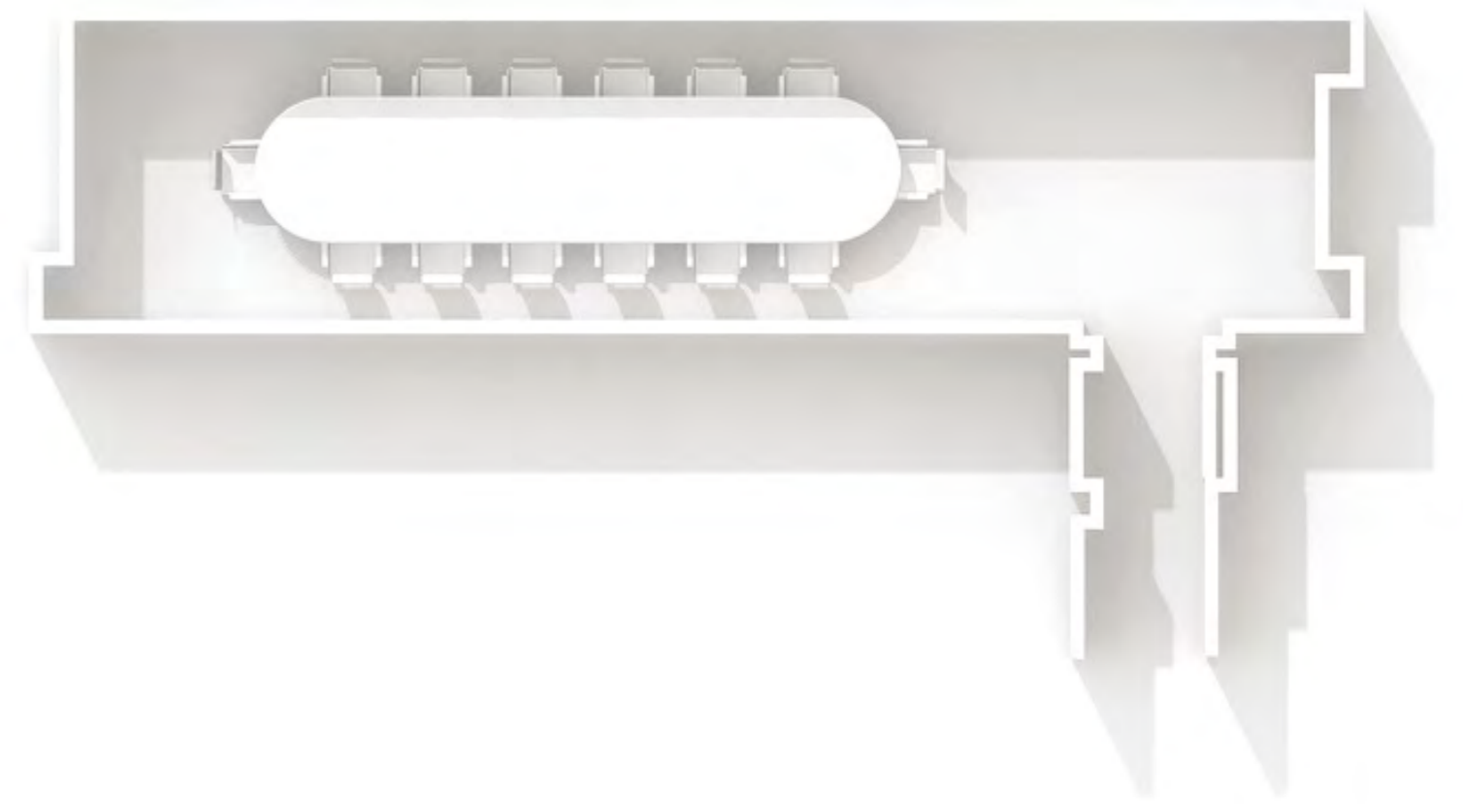
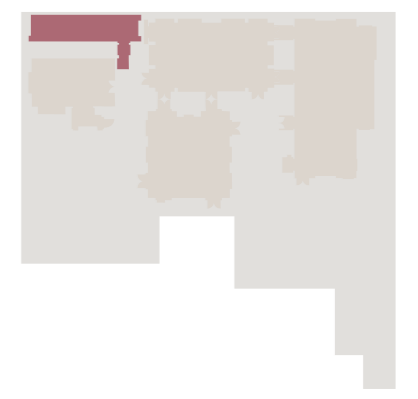
The Wine Cellar

BOARDROOM
14

RECEPTION
20

SPECIFICATION

Dimensions: 33 x 8 ft / 10 x 2 m
 Area: 256 ft² / 24 m²
 Ceiling Height: 10 ft / 3 m
 Maximum Guests: 12
 Daylight: No



The Wine Cellar at The Lanesborough

Hosting a tasting event, or dinner, in The Lanesborough's intimate and atmospheric wine cellar is an historical experience in many different respects, especially when it involves the rarest of Cognac's from The Lanesborough's Liquid Paradis selection dating back to 1770, extensive wine lists for wine paired exclusive dinners chosen with our Head Sommelier Raffaele Leonardo Silvestre and menus carefully curated and executed by Executive Chef, Shay Cooper.

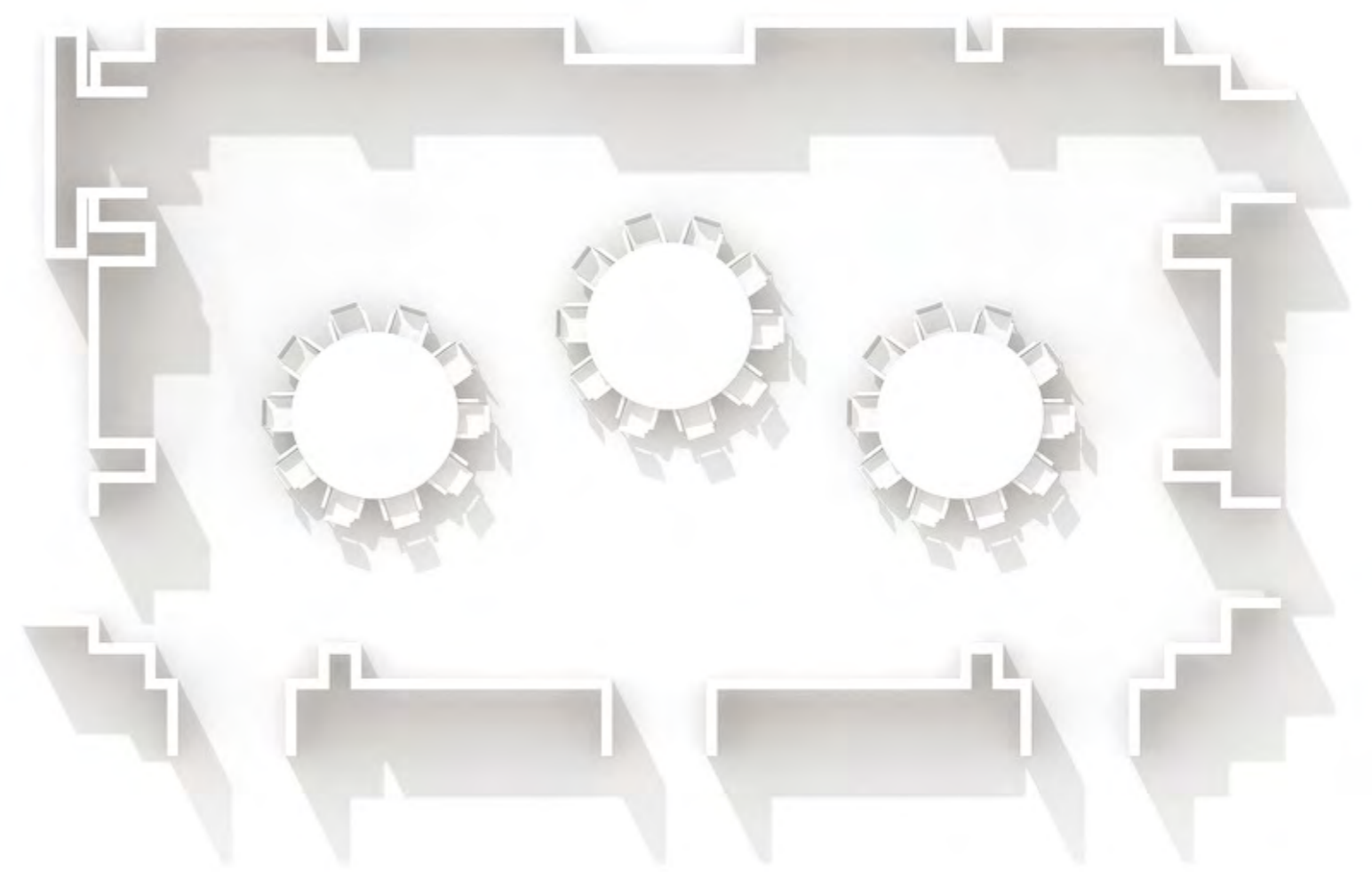


The Westminster

 LUNCH 30	 DINNER 30	 BOARDROOM 28	 RECEPTION 60	 OVAL 28	 THEATER 40	 U-SHAPE 28	 CLASSROOM 24	 CABARET 24
--	---	--	--	---	--	--	--	--

SPECIFICATION

Dimensions: 36 x 24 ft / 11 x 6.5 m
 Area: 769 ft² / 71 m²
 Ceiling Height: 12 ft / 2.45 m
 Daylight: Yes



The Westminster

The Westminster Room offers another distinct contrast perfect for board meetings, receptions and glamorous dinners, with daylight flooding through the dramatic glass conservatory roof.

The Westminster features:

- A feature cut-crystal chandelier
- A glass roof creating a bright and airy atmosphere with natural daylight
- Delicate de Gournay wallcoverings
- Superb interconnectivity with the Wilkins and Wellington Rooms.



The Wilkins

 LUNCH 20	 DINNER 20	 BOARDROOM 12	 RECEPTION 20	 OVAL 12	 THEATER 30	 U-SHAPE 15	 CLASSROOM 12	 CABARET 12
--	---	--	--	---	--	--	--	--

SPECIFICATION

Dimensions: 23 x 23 ft / 7 x 7 m
 Area: 543 ft² / 50 m²
 Ceiling Height: 8 ft / 2.15 m
 Daylight: No



The Wilkins



Relief sculptures elegantly adorn the walls of The Wilkins, one of the three connecting rooms on the lower ground floor, which is ideal as an additional reception room, private meeting room or breakout area.

The Wilkins features:

- Built in flat screen television unit
- Interconnectivity with the Westminster and Wellington Rooms
- A private and discrete environment.

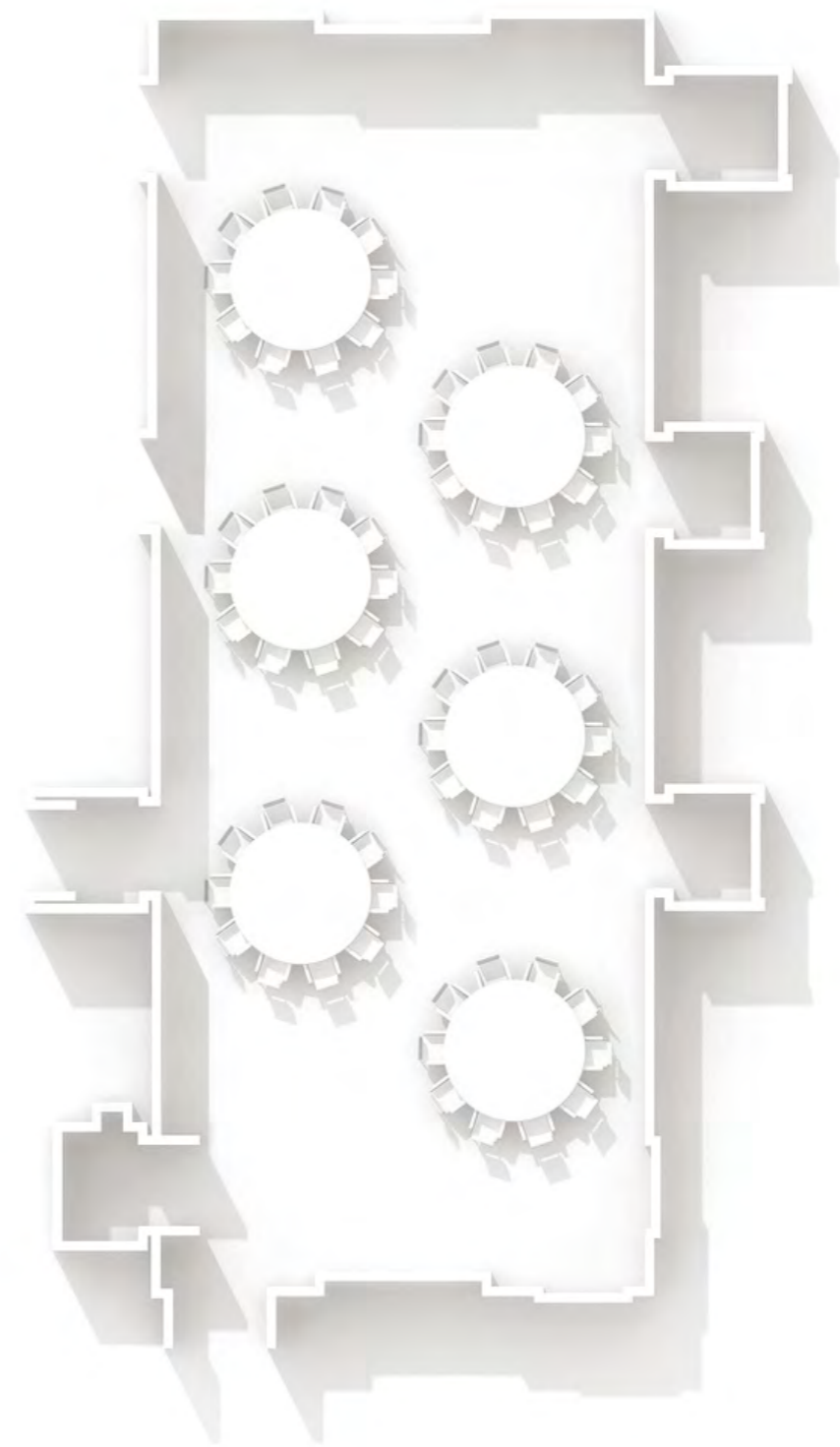


The Wellington

 LUNCH 60	 DINNER 60	 BOARDROOM 34	 RECEPTION 90	 OVAL 34	 THEATER 60	 U-SHAPE 36	 CLASSROOM 40	 CABARET 36
--	---	--	--	---	--	--	--	--

SPECIFICATION

Dimensions: 49 x 19 ft / 15 x 6 m
 Area: 954 ft² / 88 m²
 Ceiling Height: 8.5 ft / 3 m
 Daylight: Yes



The Wellington

A Georgian fireplace makes a warm traditional setting for meetings and private events, with the space to host a variety of different events, from large board room to theatre style meetings.

The Wellington features:

- Natural daylight from four large windows
- A large and flexible meeting space
- Interconnectivity with the Westminster and Wilkins Rooms
- Tall double pilasters around the walls and the room's ornate ceiling.



The Windsor

			
LUNCH 20	DINNER 20	BOARDROOM 14	OVAL 14

SPECIFICATION

Dimensions: 21 x 13 ft / 6.5 x 4 m
 Area: 264 ft² / 25 m²
 Ceiling Height: 9 ft / 3 m
 Daylight: No





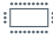






The Windsor

The Windsor is a classic boardroom, providing the ultimate privacy with timeless, neutral decoration.

The Windsor features:

- A built in flat screen plasma
- Superb location opposite to Westminster
- The ideal breakout space or private office area
- A discreet and very private location.

Room Capacities

	 Lunch	 Dinner	 Boardroom	 Reception	 Oval	 Theater	 U-Shape	 Classroom	 Cabaret
The Belgravia	110	110	50	100	50	100	40	60	55
The St. George's	50	50	30	80	30	80	26	32	32
The Great Hall	-	-	-	120	-	-	-	-	-
The Lanesborough Restaurant	150	150 seated 128 dinner & dance	-	240 standing	-	-	-	-	-
The Wine Cellar	-	-	14	20	-	-	-	-	-
The Windsor	20	20	14	-	14	-	-	-	-
The Wellington	60	60	34	90	34	60	36	40	36
The Wilkins	20	20	12	20	12	30	15	12	12
The Westminster	30	30	28	60	28	40	28	24	24



Private Dining with Shay Cooper

With menus overseen by Executive Chef Shay Cooper based on Modern British Cuisine, especially designed to allow for efficient and effortless service, the cuisine at The Lanesborough is every bit as impressive as the stunning private dining rooms. From thoughtfully prepared Day Delegate menus and elegant dinners to glamorous parties our talented chefs and private dining teams will create the perfect culinary experience for every occasion.







The Lanesborough Fleet

Whilst you are having an event here, the entire The Lanesborough fleet is at your disposal. Our impeccable chauffeur-driven car service affords guests access to our luxurious electric and hybrid vehicles, including our signature BMW i7s.

Exclusivity and Intimacy

The residential design and scale of The Lanesborough allows social events and weddings at the hotel to maintain an unparalleled level of exclusivity and intimacy, with private dining rooms and meeting spaces situated in the very heart of an iconic London institution.



Floristry

Our talented and highly skilled team of in-house floral designers is available to assist with all floral and design requirements, from opulent table pieces to refined room dressing.

Wine Pairings

Raffaele Leonardo Silvestre, Head Sommelier, will pair the perfect vintage with your menu, attending menu tastings to ensure an excellent match from The Lanesborough's extensive cellars. Private dinners and lunches can be elevated with a dynamic pairing, and our sommelier will make a selection of recommendations for each course.



Lanesborough Dining

One of London's distinguished dining destinations, The Lanesborough is celebrated as much for its exceptional food and drink as its beautiful rooms and suites. From the vibrant members club atmosphere Library Bar to the intimate Garden Room with its heated cigar terrace, the stately Withdrawing Room a local for Belgravia residents, and the hotel's jewel in the crown, The Lanesborough Grill, reinventing modern British cuisine and contemporary British artwork.



Lanesborough Club and Spa

Crowned Best London Spa at the Good Spa Awards 2023 and UK Spa of The Year 2023, The Lanesborough Club & Spa is one of London's most exclusive private members' fitness and health clubs, offering hotel guests and club members access to internationally recognised experts in the fields of mindfulness, fitness, beauty and wellness.

Rooms & Suites

Perfect for those attending an event or meeting, our 93 rooms, including 48 suites, are all stunningly furnished in the building's original Regency style: many with views over the neighbouring Royal Parks or towards Buckingham Palace. Special group rates are available for guests booking eight rooms or more.





THE LANESBOROUGH
LONDON

events.lan@oetkercollection.com

Tel: +44 20 7259 5599

OETKER COLLECTION

Masterpiece Hotels

www.oetkercollection.com